

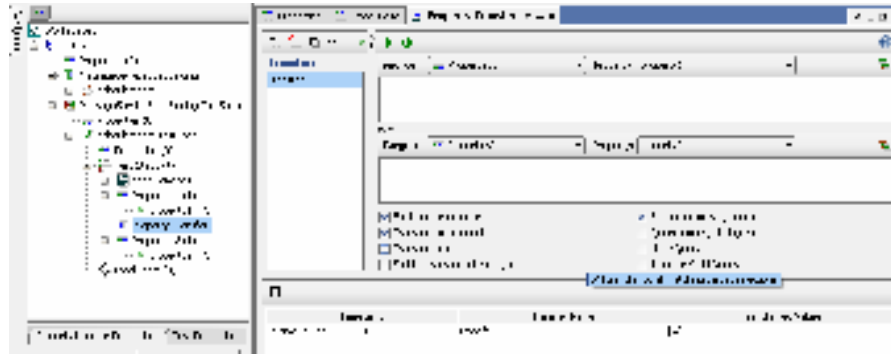
## PropertyTransfer TestStep

- A TestCase can have multiple properties
- This type of TestStep lets you copy data from one property to another
- Properties can be transferred anywhere
  - Same TestCase
  - Same TestSuite
  - Same project
  - Other projects
  - Globally



## Exercise 110.70.7: Create a PropertyTransfer TestStep

- Purpose: See how to easily transfer properties among TestSteps
- Level: Beginner



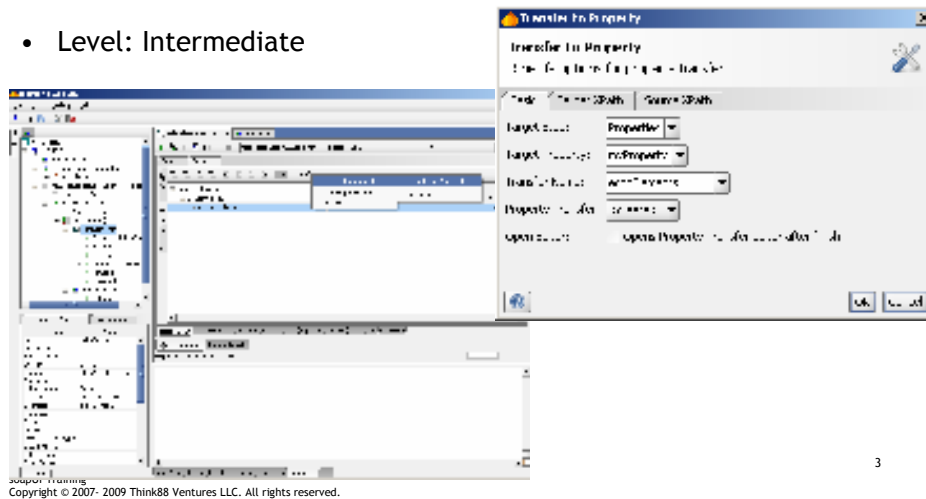
soapUI Training  
Copyright © 2007- 2009 Think88 Ventures LLC. All rights reserved.

1. Create a new project using the following WSDL:  
**<http://localhost:8080/axis/services/MessageService?WSDL>**
2. Create a TestSuite and TestCase.
3. Choose the **Add Step -> Properties** menu option.
4. Call this Properties step **Properties1**.
5. Within this step, create a property called **property1**, and give it a value of **A**.
6. Create a second Properties step, and call it **Properties2**.
7. Within this step, create a property called **property2**, and give it a value of **B**.
8. Right-click on the TestCase, and choose the **Add Step -> Property Transfer** menu option. Place it in between the two properties TestSteps.
9. Provide a name for the transfer.
10. Click the **Add a New Property Transfer** icon.
11. Select a source as **Properties1 -> property1**, and destination as **Properties2 -> property2**.
12. Run the Property Transfer TestStep, and examine the results.



## Exercise 110.70.8: Transfer Properties from a Response

- Purpose: Learn an alternate means of transferring properties
- Level: Intermediate



1. Create a new project using the following WSDL:  
**http://localhost:8080/axis/services/MessageService?WSDL**. Make sure to check the box entitled **Creates a TestSuite...**
2. Accept the defaults for generating a TestSuite.
3. Expand the TestSuite, TestCase, and TestSteps entries.
4. Create a new Properties TestStep.
5. Add a property called **myProperty** to the new Properties TestStep.
6. Double-click on the echoElements TestStep, outline view.
7. Fill in the value for echoElements Request, and run the Request.
8. Switch to the Response tab.
9. Click on the Transfer To drop-down.
10. Set the source as echoElements, Response property.
11. Set the destination as the property you created in step 5.
12. Run the PropertTransfer TestStep by clicking on the icon at the top of the window.
13. Review the output of this TestStep.